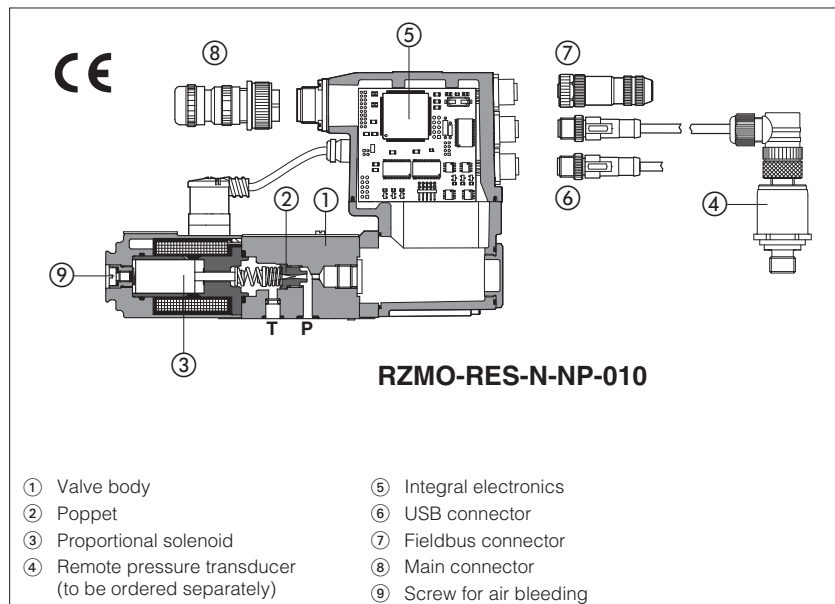


# Proportional pressure valves with remote pressure transducer

digital, closed loop high performances, rugged design

Available only on request



Proportional pressure relief and reducing valves with closed loop integral digital driver and remote pressure transducer.

Executions:

- **REB-N** with basic integral digital electronic driver, analog reference signals and USB port for software functional parameters setting
- **RES-N** with full integral digital electronic driver and fieldbus interface for functional parameters setting, reference signals and real-time diagnostics

The integral digital electronic driver performs the valve's hydraulic regulation according to the reference signal and assures valve-to-valve interchangeability thanks to the factory presetting.

The remote pressure transducer type E-ATR-8 must be ordered separately, see section 10

Typical application: installations where the proportional valve is far from the point of the hydraulic circuit in which the pressure has to be monitored.

## 1 MODEL CODE OF PRESSURE RELIEF AND COMPENSATOR VALVES

| RZMO                                                                                                                                                          | - | REB | - | N | - | NP | - | * | / | * | / | * | / | *                                                                                                                                          |
|---------------------------------------------------------------------------------------------------------------------------------------------------------------|---|-----|---|---|---|----|---|---|---|---|---|---|---|--------------------------------------------------------------------------------------------------------------------------------------------|
| <b>RZMO</b> = size 06 (ISO 4401)<br><b>AGMZO</b> = size 10, 20, 32 (ISO 6264)<br><b>LIMZO</b> = size 16÷80 (ISO 7368)<br><b>LICZO</b> = size 16÷50 (ISO 7368) |   |     |   |   |   |    |   |   |   |   |   |   |   | Seals material, see sect. 7, 8:<br>- = NBR<br><b>PE</b> = FKM<br><b>BT</b> = HNBR                                                          |
| <b>REB</b> = basic integral driver<br><b>RES</b> = full integral driver                                                                                       |   |     |   |   |   |    |   |   |   |   |   |   |   | <b>Dynamic response preset</b> see section 9:<br>- = omit for PID 1 fast (default)<br><b>2</b> = PID 2 standard<br><b>3</b> = PID 3 smooth |
| <b>N</b> = remote pressure transducer                                                                                                                         |   |     |   |   |   |    |   |   |   |   |   |   |   |                                                                                                                                            |
| <b>Fieldbus interfaces</b> - USB port always present (1):<br><b>NP</b> = Not present <b>BP</b> = PROFIBUS DP<br><b>BC</b> = CANopen <b>EH</b> = EtherCAT      |   |     |   |   |   |    |   |   |   |   |   |   |   |                                                                                                                                            |

Valve size configuration, max regulated pressure, see tech. table of relevant REB/RES-P valves, as indicated in sect. 18

(1) **REB** available only in version **NP**; **RES** available only in version **BC, BP, EH**

## 2 MODEL CODE OF PRESSURE REDUCING VALVES

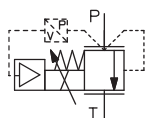
| RZGO                                                                                                                                                     | - | REB | - | N | - | NP | - | * | / | * | / | * | / | *                                                                                                                                          |
|----------------------------------------------------------------------------------------------------------------------------------------------------------|---|-----|---|---|---|----|---|---|---|---|---|---|---|--------------------------------------------------------------------------------------------------------------------------------------------|
| <b>RZGO</b> = size 06 (ISO 4401)<br><b>AGRCZO</b> = size 10, 20 (ISO 6264)<br><b>LIRZO</b> = size 16÷40 (ISO 7368)                                       |   |     |   |   |   |    |   |   |   |   |   |   |   | Seals material, see sect. 7, 8:<br>- = NBR<br><b>PE</b> = FKM<br><b>BT</b> = HNBR                                                          |
| <b>REB</b> = basic integral driver<br><b>RES</b> = full integral driver                                                                                  |   |     |   |   |   |    |   |   |   |   |   |   |   | <b>Dynamic response preset</b> see section 9:<br>- = omit for PID 1 fast (default)<br><b>2</b> = PID 2 standard<br><b>3</b> = PID 3 smooth |
| <b>N</b> = remote pressure transducer                                                                                                                    |   |     |   |   |   |    |   |   |   |   |   |   |   |                                                                                                                                            |
| <b>Fieldbus interfaces</b> - USB port always present (1):<br><b>NP</b> = Not present <b>BP</b> = PROFIBUS DP<br><b>BC</b> = CANopen <b>EH</b> = EtherCAT |   |     |   |   |   |    |   |   |   |   |   |   |   |                                                                                                                                            |

Valve size configuration, max regulated pressure, see tech. table of relevant REB/RES-P valves, as indicated in sect. 18

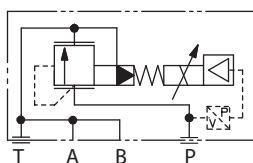
(1) **REB** available only in version **NP**; **RES** available only in version **BC, BP, EH**

### 3 HYDRAULIC SYMBOLS PRESSURE RELIEF AND COMPENSATOR VALVE

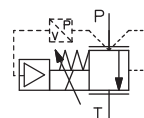
**RZMO-REB-N\*-010**  
**RZMO-RES-N\*-010**



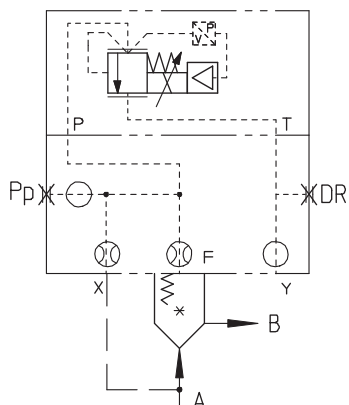
**RZMO-REB-N\*-030**  
**RZMO-RES-N\*-030**



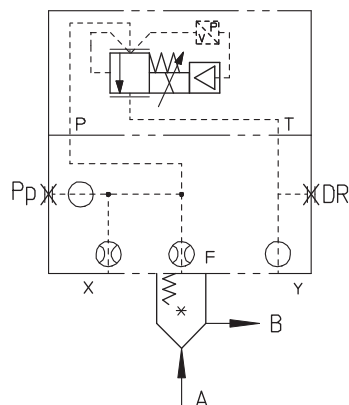
**AGMZO-REB-N\*-**  
**AGMZO-RES-N\*-**



**LIMZO-REB-N\*-**  
**LIMZO-RES-N\*-**

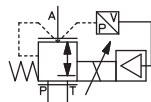


**LICZO-REB-N\*-**  
**LICZO-RES-N\*-**

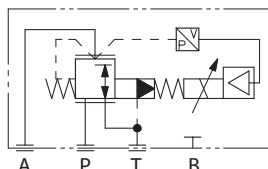


### 4 HYDRAULIC SYMBOLS PRESSURE REDUCING VALVE

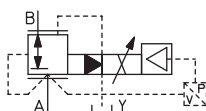
**RZGO-REB-N\*-010**  
**RZGO-RES-N\*-010**



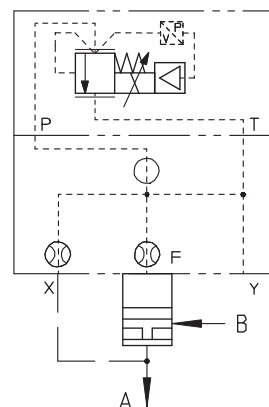
**RZGO-REB-N\*-033**  
**RZGO-RES-N\*-033**



**AGRCZO-REB-N\*-010**  
**AGRCZO-RES-N\*-010**



**LIRZO-REB-N\*-**  
**LIRZO-RES-N\*-**



### 5 GENERAL NOTES

Proportional valves are CE marked according to the applicable Directives (e.g. Immunity/Emission EMC Directive and Low Voltage Directive). Installation, wirings and start-up procedures must be performed according to the general prescriptions shown in table F003 and in the installation notes supplied with relevant components.

The electrical signals of the valve (e.g. monitor signals) must not be directly used to activate safety functions or components, as prescribed by the European standards (Safety requirements of fluid technology systems and components-hydraulics, EN-982).

### 6 FIELDBUS - only for RES

Fieldbus allows the direct communication of the proportional valve with machine control unit for digital reference signal, diagnostics and settings of functional parameters. Analog reference signal remain available on the main connector for quick commissioning and maintenance. For detailed information about fieldbus features and specification see tech table **GS510**.

## 7 MAIN CHARACTERISTICS - based on mineral oil ISO VG 46 at 50 °C

|                                        |                                                                                                                                                                             |                                   |                                   |                                         |
|----------------------------------------|-----------------------------------------------------------------------------------------------------------------------------------------------------------------------------|-----------------------------------|-----------------------------------|-----------------------------------------|
| Assembly position                      | Any position                                                                                                                                                                |                                   |                                   |                                         |
| Subplate surface finishing             | Roughness index, Ra 0,4 flatness ratio 0,01/100 (ISO 1101)                                                                                                                  |                                   |                                   |                                         |
| MTTFd valves according to EN ISO 13849 | See technical table P007                                                                                                                                                    |                                   |                                   |                                         |
| Ambient temperature range              | <b>REB, RES: standard</b> = -20°C ÷ +60°C, <b>/BT option</b> = -40°C ÷ +60°C                                                                                                |                                   |                                   |                                         |
| Storage temperature range              | <b>REB, RES: standard</b> = -20°C ÷ +70°C, <b>/BT option</b> = -40°C ÷ +70°C                                                                                                |                                   |                                   |                                         |
| Coil resistance R at 20°C              | 3 ÷ 3,3 Ω                                                                                                                                                                   |                                   |                                   |                                         |
| Max. solenoid current                  | 2,6 A                                                                                                                                                                       |                                   |                                   |                                         |
| Max. power                             | <b>REB, RES</b> = 50 Watt                                                                                                                                                   |                                   |                                   |                                         |
| Remote pressure transducer             | Power supply: +24VDC @ max 100 mA<br>Pressure input: voltage, maximum range ±10 VDC Input impedance, Ri > 50 Ω<br>current, maximum range ±20 mA Input impedance, Ri = 500 Ω |                                   |                                   |                                         |
| Insulation class                       | H (180°) Due to the occuring surface temperatures of the solenoid coils, the European standards ISO 13732-1 and EN982 must be taken into account                            |                                   |                                   |                                         |
| Protection degree to DIN EN60529       | IP66/67 with mating connectors                                                                                                                                              |                                   |                                   |                                         |
| Tropicalization                        | Tropical coating on electronics PCB                                                                                                                                         |                                   |                                   |                                         |
| Duty factor                            | Continuous rating (ED=100%)                                                                                                                                                 |                                   |                                   |                                         |
| EMC, climate and mechanical load       | See technical table G004                                                                                                                                                    |                                   |                                   |                                         |
| Communication interface                | USB<br>Atos ASCII coding                                                                                                                                                    | CANopen<br>EN50325-4 + DS408      | PROFIBUS DP<br>EN50170-2/IEC61158 | EtherCAT<br>IEC 61158                   |
| Communication physical layer           | not insulated<br>USB 2.0 + USB OTG                                                                                                                                          | optical insulated<br>CAN ISO11898 | optical insulated<br>RS485        | Fast Ethernet, insulated<br>100 Base TX |

(1) Average response time value; the pressure variation in consequence of a modification of the reference input signal to the valve is affected by the stiffness of the hydraulic circuit: greater is the stiffness of the circuit, faster is the dynamic response, see section 9.

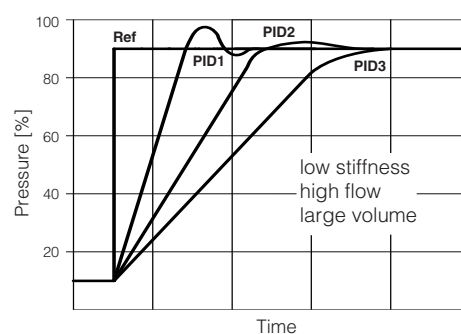
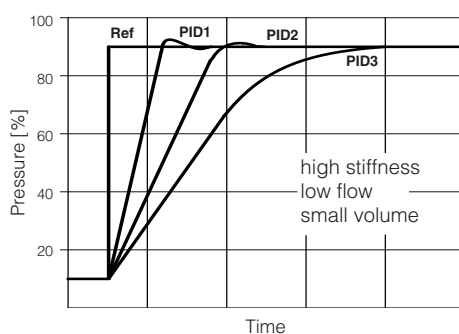
## 8 SEALS AND HYDRAULIC FLUID - for other fluids not included in below table, consult our technical office

| Seals, recommended fluid temperature | NBR seals (standard) = -20°C ÷ +60°C, with HFC hydraulic fluids = -20°C ÷ +50°C<br>FKM seals (/PE option) = -20°C ÷ +80°C<br>HNBR seals (/BT option) = -40°C ÷ +60°C, with HFC hydraulic fluids = -40°C ÷ +50°C |                            |               |
|--------------------------------------|-----------------------------------------------------------------------------------------------------------------------------------------------------------------------------------------------------------------|----------------------------|---------------|
| Recommended viscosity                | 20÷100 mm²/s - max allowed range 15 ÷ 380 mm²/s                                                                                                                                                                 |                            |               |
| Fluid contamination class            | ISO 4406 class 20/18/15 NAS 1638 class 9, achievable with in line filter - 10 µm (β10 ≥75 recommended)                                                                                                          |                            |               |
| Hydraulic fluid                      | Suitable seals type                                                                                                                                                                                             | Classification             | Ref. Standard |
| Mineral oils                         | NBR, FKM, HNBR                                                                                                                                                                                                  | HL, HLP, HLPD, HVLP, HVLPD | DIN 51524     |
| Flame resistant without water        | FKM                                                                                                                                                                                                             | HFDU, HFDR                 | ISO 12922     |
| Flame resistant with water           | NBR, HNBR                                                                                                                                                                                                       | HFC                        |               |

## 9 DYNAMIC RESPONSE - 4 pressure PIDs

The valve is provided with 4 PIDs configurations to match different hydraulic conditions. The required PID configuration can be selected before the valve commissioning, through Atos E-SW software via USB port. Only for **RES** the PID can be also selected in real time, through PLC via fieldbus.

| PID | Dynamic response<br>example diagrams at side |
|-----|----------------------------------------------|
| 1   | Fast - default                               |
| 2   | Standard                                     |
| 3   | Smooth                                       |
| 4   | Open Loop                                    |



Above indications have to be considered as a general guideline, being affected by hydraulic circuit stiffness, working flow and dead volume. The valve's dynamics can be further optimized on the specific application, customizing PIDs parameters.

## 10 REMOTE PRESSURE TRANSDUCER

### 10.1 Pressure transducer failure - only for /C option

In case of pressure transducer failure, only for 4 ÷ 20 mA pressure transducer feedback, the valve's reaction can be configured through Atos E-SW software to:

- cut off the current to solenoid, therefore the regulated pressure will be reduced to minimum value (default setting)
- automatically switch the pressure control from closed loop (PID1,2,3) to open loop (PID4), to let the valve to temporarily operate with reduced regulation accuracy

### 10.2 Remote pressure transducer factory preset

The valve is factory preset to operate with pressure transducer type E-ATR-8 having a standard measuring range specifically sized to match the valve max regulated pressure. Please refer to below table to select the correct E-ATR-8 measuring range:

| Valve model         | Valve max regulated pressure | E-ATR-8 standard pressure measuring range (table GS465) |
|---------------------|------------------------------|---------------------------------------------------------|
| RZGO                | <b>32</b> = 32 bar           | <b>60</b> = 0 ÷ 60 bar                                  |
| RZGO, RZMO          | <b>100</b> = 100 bar         | <b>160</b> = 0 ÷ 160 bar                                |
| AGMZO, AGRCZO       | <b>210</b> = 210 bar         | <b>250</b> = 0 ÷ 250 bar                                |
| LIMZO, LIRZO, LICZO | <b>315</b> = 315 bar         | <b>400</b> = 0 ÷ 400 bar                                |
|                     | <b>350</b> = 350 bar         |                                                         |

In case the selected pressure transducer has a measuring range different to the above standard, the valve pressure feedback scale must be set according to the new measuring range, using E-SW software.

Please consider that a different pressure measuring range respect to the standard may cause following situations:

- selected range higher than standard = the valve regulation accuracy will be reduced in consequence of the lower pressure feedback resolution
- selected range lower than standard = the transducer could be damaged if the system pressure will exceed transducer max measuring range

## 11 ELECTRONIC OPTIONS

Standard driver execution provides on the 7 pin main connector:

**Power supply** - 24 VDC must be appropriately stabilized or rectified and filtered; a 2,5 A fuse time lag is required in series to each driver power supply. Apply at least a 10000 µF/40 V capacitance to single phase rectifiers or a 4700 µF/40 V capacitance to three phase rectifiers

**Reference input signal** - analog differential input with 0÷+10 V<sub>DC</sub> nominal range (pin D,E), proportional to desired valve pressure regulation

**Monitor output signal** - analog output signal proportional to the actual valve pressure regulation = 0÷+10 V<sub>DC</sub> nominal range

**Note:** a minimum booting time of 500 ms has been considered from the driver energizing with the 24 VDC power supply before the valve has been ready to operate. During this time the current to the valve coils is switched to zero.

### 11.1 Option /I

It provides 4 ÷ 20 mA current reference and monitor signals, instead of the standard 0÷+10 V<sub>DC</sub>.

Input signal can be reconfigured via software selecting between voltage and current, within a maximum range of ±10 V or ±20 mA.

It is normally used in case of long distance between the machine control unit and the valve or where the reference signal can be affected by electrical noise; the valve functioning is disabled in case of reference signal cable breakage

### 11.2 Option /Q

To enable the driver, supply 24 VDC on pin C referred to pin B: Enable input signal allows to enable/disable the current supply to the solenoid, without removing the electrical power supply to the driver; it is used to maintain active the communication and the other driver functions when the valve has to be disabled. This condition does not comply with European Norms EN13849-1 (ex EN954-1).

### 11.3 Option /Z

It provides, on the 12 pin main connector, the following additional features:

#### Enable Input Signal

To enable the driver, supply 24 VDC on pin 3 referred to pin 2: Enable input signal allows to enable/disable the current supply to the solenoid, without removing the electrical power supply to the driver; it is used to maintain active the communication and the other driver functions when the valve has to be disabled. This condition does not comply with European Norms EN13849-1 (ex EN954-1).

#### Fault Output Signal

Fault output signal indicates fault conditions of the driver (solenoid short circuits/not connected, reference signal cable broken for 4÷20mA input, etc.). Fault presence corresponds to 0 VDC, normal working corresponds to 24 VDC (pin 11 referred to pin 2): Fault status is not affected by the Enable input signal

#### Power supply for driver's logics and communication

Separate power supply (pin 9,10) allow to cut solenoid power supply (pin 1,2) while maintaining active diagnostics, USB and fieldbus communication.

A safety fuse is required in series to each driver power supply: 500 mA fast fuse.

### 11.4 Options /C

Option /C is available to connect pressure transducers with 4 ÷ 20 mA current output signal, instead of the standard ±10 V.

Input signal can be reconfigured via software selecting between voltage and current, within a maximum range of ±10 V or ±20 mA.

### 11.5 Possible combined options: /CI, /IQ, /IZ, /CIQ, /CIZ

## 12 ELECTRONIC CONNECTIONS

### 12.1 Main connector signals - 7 pin - standard and /Q options (A1)

| PIN | Standard                         | /Q     | TECHNICAL SPECIFICATIONS                                                       | NOTES                                                |
|-----|----------------------------------|--------|--------------------------------------------------------------------------------|------------------------------------------------------|
| A   | V+                               |        | Power supply 24 Vdc                                                            | Input - power supply                                 |
| B   | V0                               |        | Power supply 0 Vdc                                                             | Gnd - power supply                                   |
| C   | AGND                             |        | Analog ground                                                                  | Gnd - analog signal                                  |
|     |                                  | ENABLE | Enable (24 Vdc) or disable (0 Vdc) the driver, referred to V0                  | Input - on/off signal                                |
| D   | P_INPUT+                         |        | Pressure reference input signal: $\pm 10$ Vdc / $\pm 20$ mA maximum range      | Input - analog signal<br><b>Software selectable</b>  |
| E   | INPUT-                           |        | Negative reference input signal for P_INPUT+                                   | Input - analog signal                                |
| F   | P_MONITOR referred to: AGND   V0 |        | Pressure monitor output signal: $0 \div 10$ Vdc / $0 \div 20$ mA maximum range | Output - analog signal<br><b>Software selectable</b> |
| G   | EARTH                            |        | Internally connected to driver housing                                         |                                                      |

### 12.2 Main connector signals - 12 pin - /Z option (A2)

| PIN | /Z        | TECHNICAL SPECIFICATIONS                                                                       | NOTES                                                |
|-----|-----------|------------------------------------------------------------------------------------------------|------------------------------------------------------|
| 1   | V+        | Power supply 24 Vdc                                                                            | Input - power supply                                 |
| 2   | V0        | Power supply 0 Vdc                                                                             | Gnd - power supply                                   |
| 3   | ENABLE    | Enable (24 Vdc) or disable (0 Vdc) the driver, referred to V0                                  | Input - on/off signal                                |
| 4   | P_INPUT+  | Pressure reference input signal: $\pm 10$ Vdc / $\pm 20$ mA maximum range                      | Input - analog signal<br><b>Software selectable</b>  |
| 5   | INPUT-    | Negative reference input signal for P_INPUT+                                                   | Input - analog signal                                |
| 6   | P_MONITOR | Pressure monitor output signal: $0 \div 10$ Vdc / $0 \div 20$ mA maximum range, referred to V0 | Output - analog signal<br><b>Software selectable</b> |
| 7   | NC        | Do not connect                                                                                 |                                                      |
| 8   | NC        | Do not connect                                                                                 |                                                      |
| 9   | VL+       | Power supply 24 Vdc for driver's logic and communication                                       | Input - power supply                                 |
| 10  | V0        | Power supply 0 Vdc for driver's logic and communication                                        | Gnd - power supply                                   |
| 11  | FAULT     | Fault (0 Vdc) or normal working (24 Vdc), referred to V0                                       | Output - on/off signal                               |
| PE  | EARTH     | Internally connected to driver housing                                                         |                                                      |

### 12.3 Communication connectors (B) - (C)

| (B) | USB connector - M12 - 5 pin | always present              |
|-----|-----------------------------|-----------------------------|
| PIN | SIGNAL                      | TECHNICAL SPECIFICATION (1) |
| 1   | +5V_USB                     | Power supply                |
| 2   | ID                          | Identification              |
| 3   | GND_USB                     | Signal zero data line       |
| 4   | D-                          | Data line -                 |
| 5   | D+                          | Data line +                 |

| C1 BC fieldbus execution, connector - M12 - 5 pin (2) |          |                             |
|-------------------------------------------------------|----------|-----------------------------|
| PIN                                                   | SIGNAL   | TECHNICAL SPECIFICATION (1) |
| 1                                                     | CAN_SHLD | Shield                      |
| 2                                                     | NC       | do not connect              |
| 3                                                     | CAN_GND  | Signal zero data line       |
| 4                                                     | CAN_H    | Bus line (high)             |
| 5                                                     | CAN_L    | Bus line (low)              |

| (C2) BP fieldbus execution, connector - M12 - 5 pin (2) |        |                                       |
|---------------------------------------------------------|--------|---------------------------------------|
| PIN                                                     | SIGNAL | TECHNICAL SPECIFICATION (1)           |
| 1                                                       | +5V    | Termination supply signal             |
| 2                                                       | LINE-A | Bus line (high)                       |
| 3                                                       | DGND   | Data line and termination signal zero |
| 4                                                       | LINE-B | Bus line (low)                        |
| 5                                                       | SHIELD |                                       |

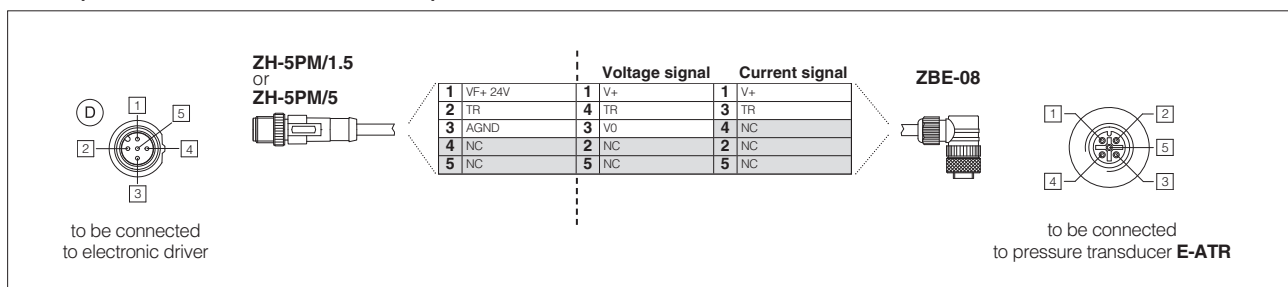
| EH fieldbus execution, connector - M12 - 4 pin (2) |        |                             |
|----------------------------------------------------|--------|-----------------------------|
| PIN                                                | SIGNAL | TECHNICAL SPECIFICATION (1) |
| 1                                                  | TX+    | Transmitter                 |
| 2                                                  | RX+    | Receiver                    |
| 3                                                  | TX-    | Transmitter                 |
| 4                                                  | RX-    | Receiver                    |
| Housing                                            | SHIELD |                             |

Notes: (1) shield connection on connector's housing is recommended (2) only for RES execution

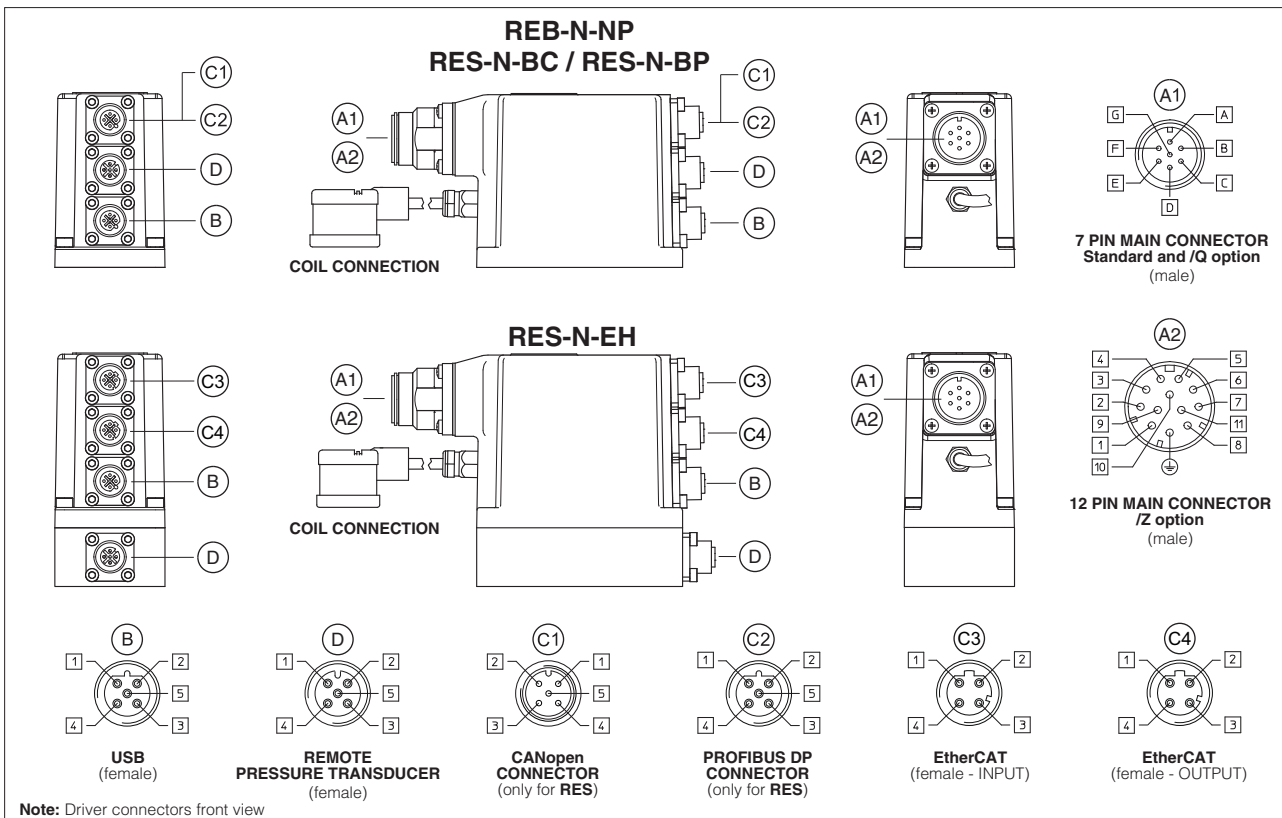
### 12.4 Remote pressure transducer connector - M12 - 5 pin (D)

| PIN | SIGNAL  | TECHNICAL SPECIFICATION                                    | NOTES                                               | Voltage | Current |
|-----|---------|------------------------------------------------------------|-----------------------------------------------------|---------|---------|
| 1   | VF +24V | Power supply +24Vdc                                        | Output - power supply                               | Connect | Connect |
| 2   | TR      | Signal transducer $\pm 10$ Vdc / $\pm 20$ mA maximum range | Input - analog signal<br><b>Software selectable</b> | Connect | Connect |
| 3   | AGND    | Common gnd for transducer power and signals                | Common gnd                                          | Connect | /       |
| 4   | NC      | Not Connect                                                |                                                     | /       | /       |
| 5   | NC      | Not Connect                                                |                                                     | /       | /       |

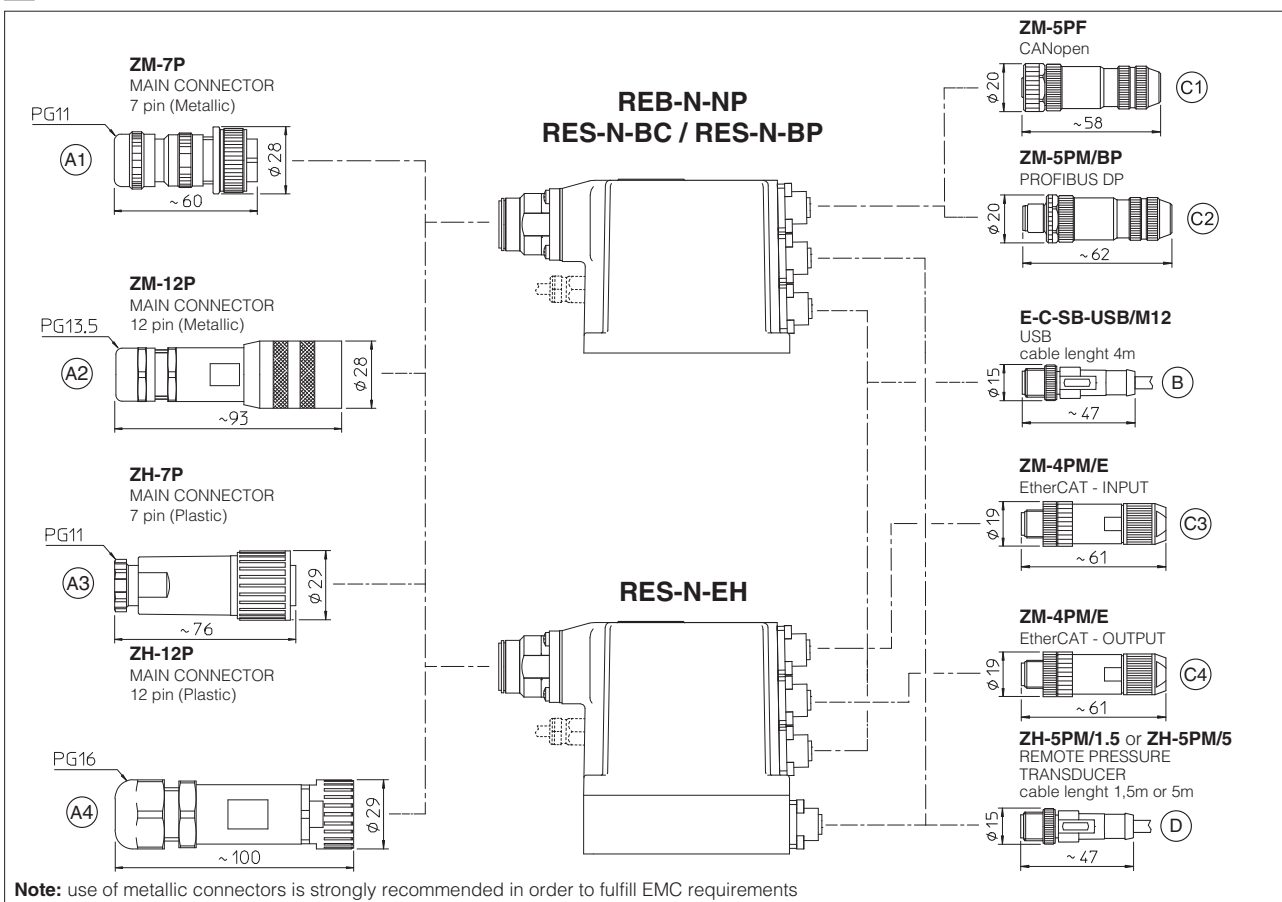
#### Remote pressure transducer connection - example



## 13 CONNECTIONS



## 14 CONNECTORS



**15 MODEL CODES OF MAIN CONNECTORS AND COMMUNICATION CONNECTORS** - to be ordered separately

| VALVE VERSION     | REB, RES     | REB/Z, RES/Z | Remote Transducer |              | BC - CANopen | BP - PROFIBUS DP | EH - EtherCAT |
|-------------------|--------------|--------------|-------------------|--------------|--------------|------------------|---------------|
| CONNECTOR CODE    | ZM-7P (A1)   | ZM-12P (A2)  | ZH-5PM/1.5 (D)    | ZH-5PM/5 (D) | ZM-5PF (C1)  | ZM-5PM/BP (C2)   | ZM-4PM/E (C3) |
|                   | ZH-7P (A3)   | ZH-12P (A4)  |                   |              |              |                  | ZM-4PM/E (C4) |
| PROTECTION DEGREE | IP67         |              |                   |              |              |                  |               |
| DATA SHEET        | TGS205, K500 |              |                   |              |              |                  |               |

## 16 PROGRAMMING TOOLS - see tech table GS500

Valve's functional parameters and configurations, can be easily set and optimized using Atos E-SW programming software connected via USB port to the digital driver. For fieldbus versions, the software permits valve's parameterization through USB port also if the driver is connected to the central machine unit via fieldbus.

The software is available in different versions according to the driver's options:

**E-SW-BASIC** support: NP (USB) PS (Serial) IR (Infrared)

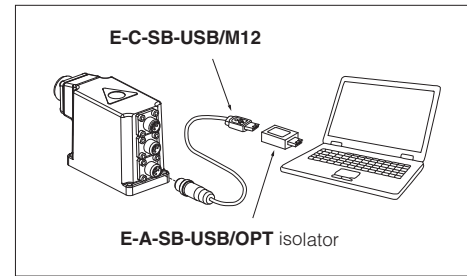
**E-SW-FIELDBUS** support: BC (CANopen) BP (PROFIBUS DP) EH (EtherCAT)  
EW (POWERLINK) EI (EtherNet/IP)

**E-SW-\*/PQ** support: valves with SP, SF, SL alternated control (e.g. E-SW-BASIC/PQ)

**WARNING: drivers USB port is not isolated!**

The use of isolator adapter is highly recommended for PC protection (see table GS500)

### USB connection



## 17 ELECTRONIC DRIVERS

|               |                   |            |
|---------------|-------------------|------------|
| Valve model   | <b>REB</b>        | <b>RES</b> |
| Drivers model | E-RI-REB-N        | E-RI-RES-N |
| Type          | Digital           |            |
| Format        | Integral to valve |            |
| Data sheet    | TGS205            |            |

**Note:** for main and communication connectors see sections 14, 15

## 18 INSTALLATION DIMENSIONS

### Pressure relief

**RZMO-RE\*-N-010** see technical table FS010

**RZMO-RE\*-N-030** see technical table FS067

**AGMZO** see technical table FS040

**LIMZO** see technical table FS305

### Pressure compensator

**LICZO** see technical table FS305

### Pressure reducing

**RZGO-RE\*-N-010** see technical table FS020

**RZGO-RE\*-N-033** see technical table FS075

**AGRCZO** see technical table FS055

**LIRZO** see technical table FS305